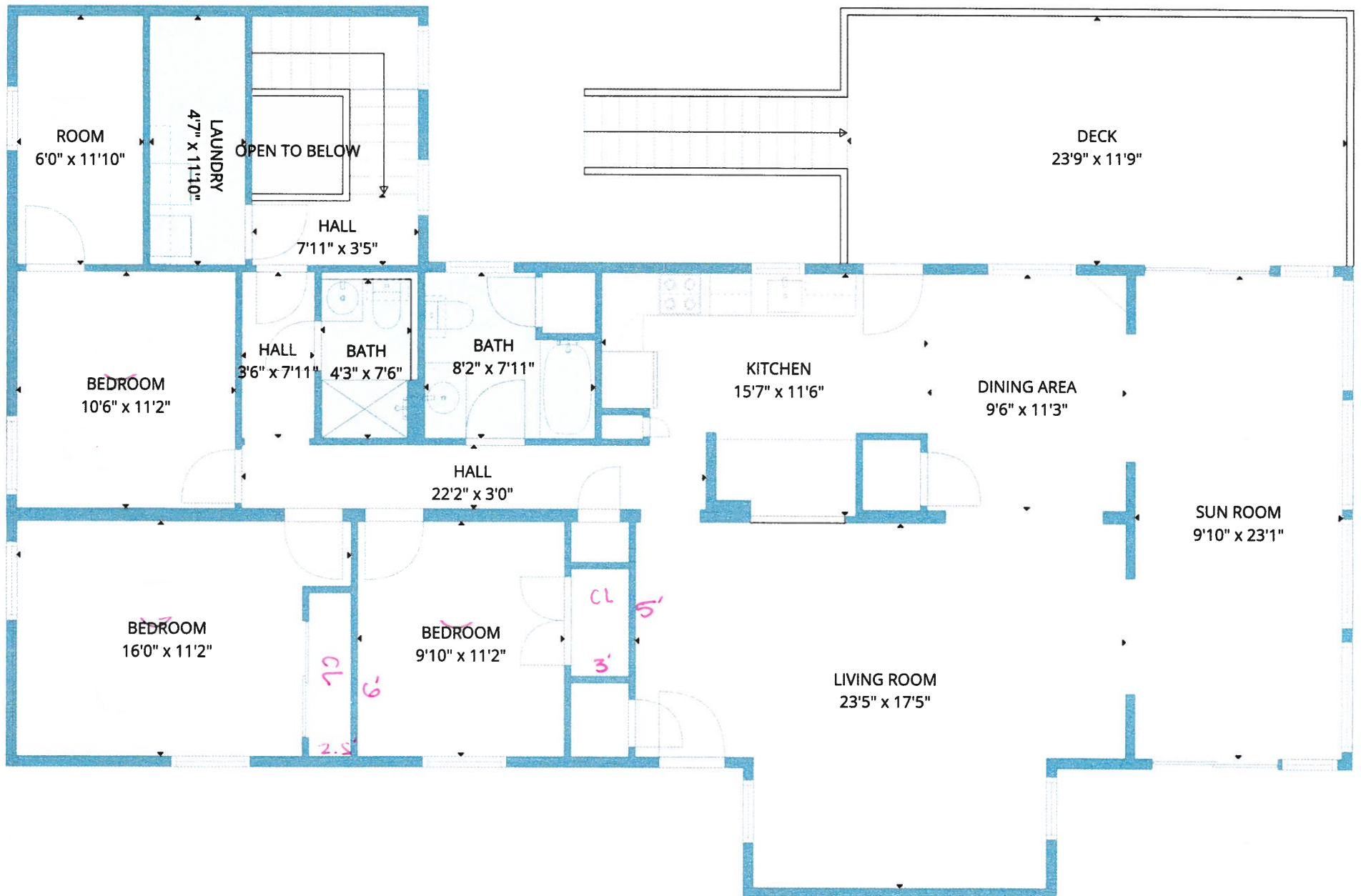


TOTAL: 2726 sq. ft

Basement 1: 965 sq. ft, 1st floor: 1761 sq. ft

EXCLUDED AREAS: GARAGE: 367 sq. ft, UTILITY: 106 sq. ft, SHED: 23 sq. ft,
 PATIO: 239 sq. ft, COVERED PATIO: 600 sq. ft, OPEN TO BELOW: 20 sq. ft,
 DECK: 281 sq. ft, WALLS: 226 sq. ft

This drawing is conceptual only and for the convenience of reference. It should not be relied upon as representation express or implied, of the final size, location or dimensions.

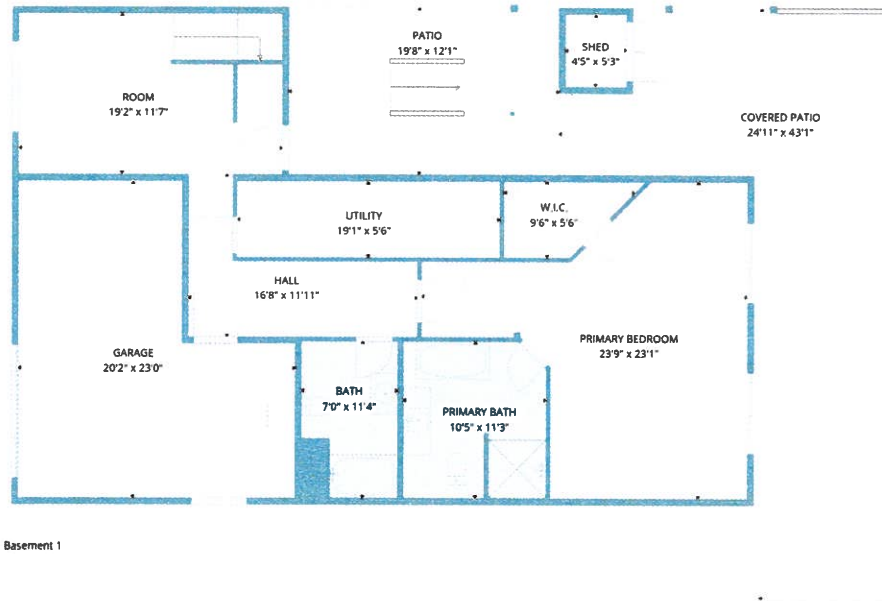
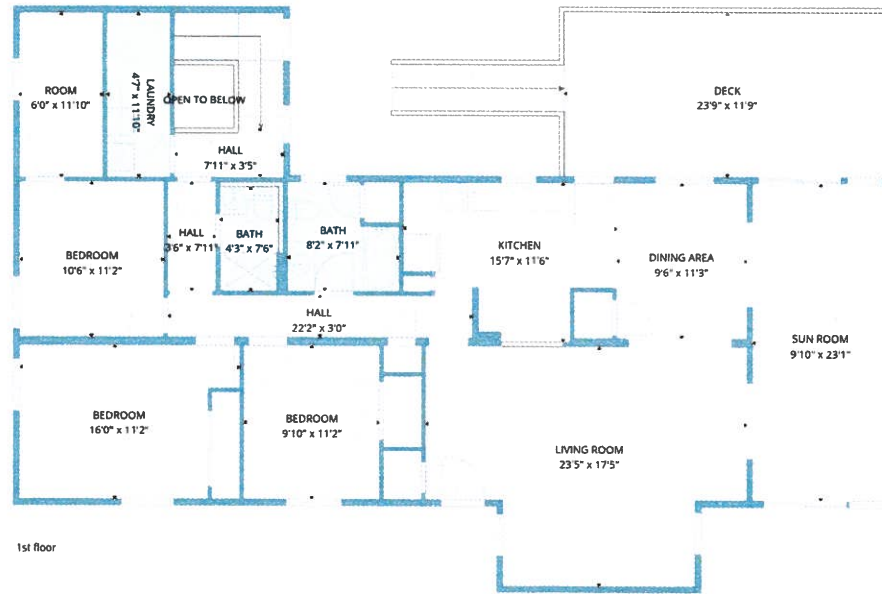


TOTAL: 2726 sq. ft

Basement 1: 965 sq. ft, 1st floor: 1761 sq. ft

EXCLUDED AREAS: GARAGE: 367 sq. ft, UTILITY: 106 sq. ft, SHED: 23 sq. ft,
 PATIO: 239 sq. ft, COVERED PATIO: 600 sq. ft, OPEN TO BELOW: 20 sq. ft,
 DECK: 281 sq. ft, WALLS: 226 sq. ft

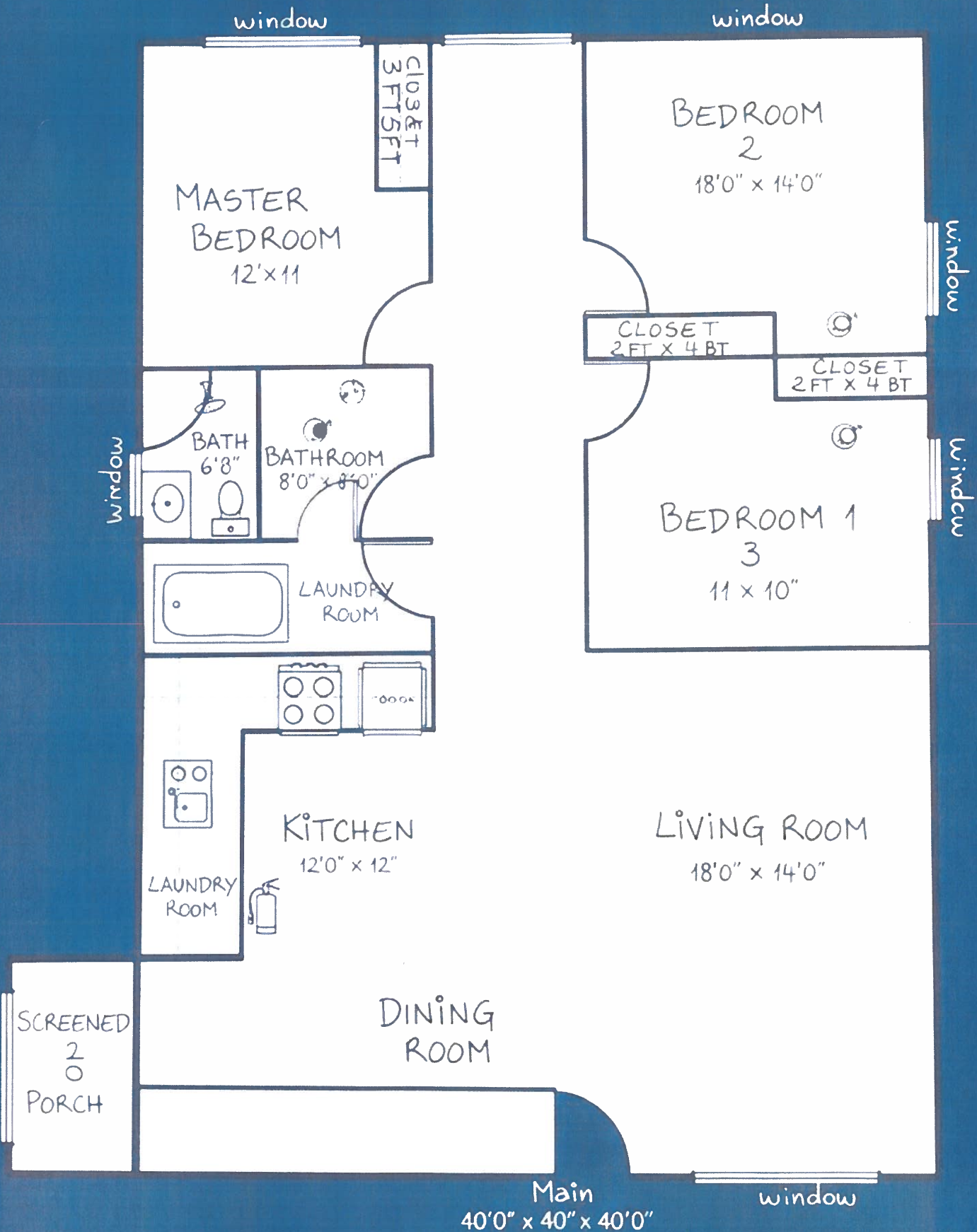
This drawing is conceptual only and for the convenience of reference. It should not be relied upon as representation express or implied, of the final size, location or dimensions.



TOTAL: 2726 sq. ft

Basement 1: 965 sq. ft, 1st floor: 1761 sq. ft

EXCLUDED AREAS: GARAGE: 367 sq. ft, UTILITY: 106 sq. ft, SHED: 23 sq. ft,
 PATIO: 239 sq. ft, COVERED PATIO: 600 sq. ft, OPEN TO BELOW: 20 sq. ft,
 DECK: 281 sq. ft, WALLS: 226 sq. ft



FLOOR PLAN - 3 BEDROOM APARTMENT
 DATE: OCT 26, 2023
 DRAWN BY: ARCHITECT'S NAME